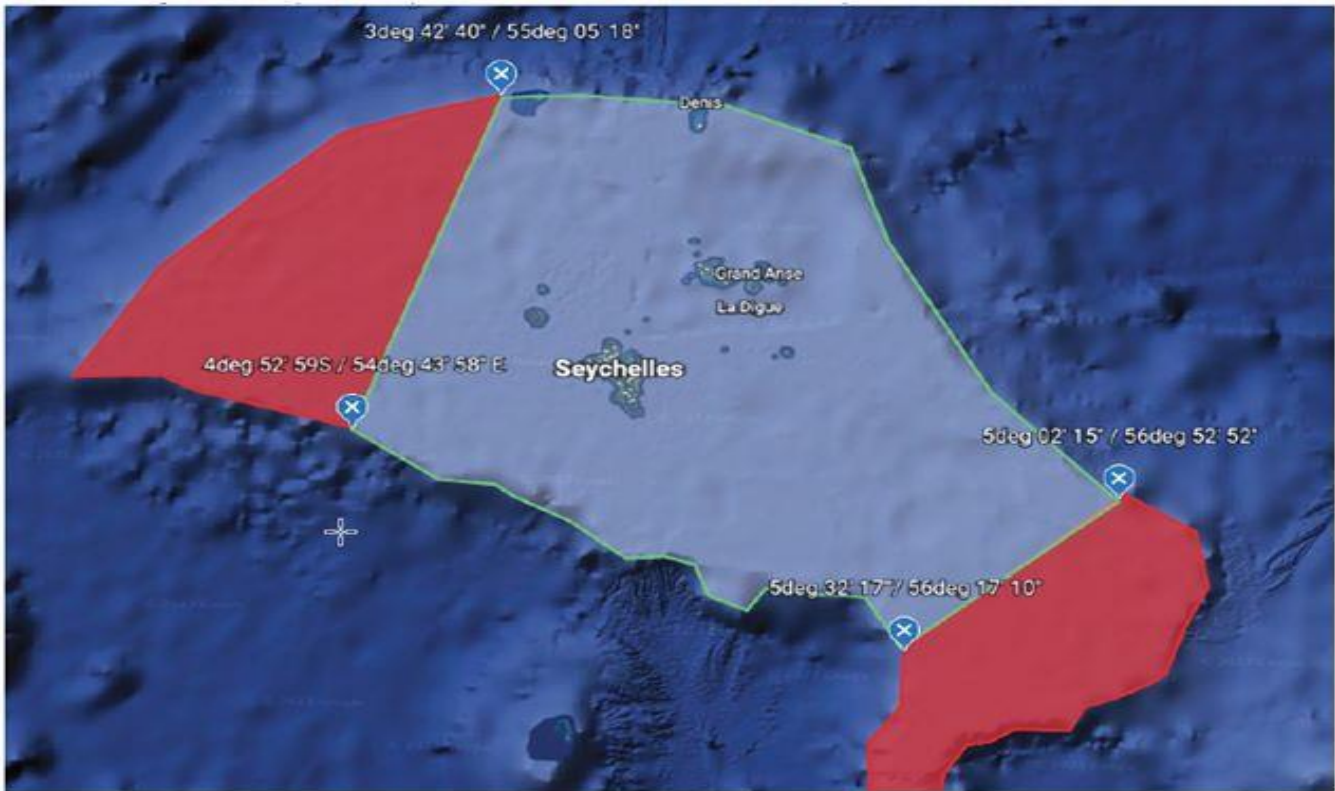




**Heineken®**  
**YELLOW FIN CUP**  
**FISHING TOURNAMENT**  
**SATURDAY 30<sup>th</sup> September 2023**  
**RULES & ENTRY FORM**

1. **STYLE**- This is a trolling only competition and fish must be caught on rod & reel only using live bait, dead bait or artificial lures. Electric reels are not allowed except for use with hookless teasers. Hand lines will be allowed for running hookless teasers only. Popping and jigging allowed.
2. **ANGLERS** - A team must consist of a minimum of 2 anglers.
3. **STARTING TIME** - Departure time is 4:00 A.M. on Saturday 30<sup>th</sup> September 2023 from Eden Island Marina, Marine Charter Association or Providence.
4. **ENDING TIME** - Return time to Marine Charter Association is 5:00 P.M. on Saturday 30<sup>th</sup> September 2023.
5. **REGISTRATION DEADLINE** - The deadline for registration is 6:00 P.M on Friday, 29<sup>th</sup> September 2023.
6. **REGISTRATION FEE** - The entrance fee is SR 1,500 per boat. No refund will be issued once a team has registered. However, a team may switch to another boat prior to the Registration Deadline.
7. **PRIZE-GIVING** – The prize-giving will be held on Saturday 30<sup>th</sup> September 2023 at Marine Charter Association immediately after the weigh-in.
8. **SKIPPERS MEETING** - A skippers/team meeting will be held at Marine Charter Association at 5:00 P.M. on Thursday 28<sup>th</sup> September 2023. All teams must be represented by at least 1 team member.

## 9. MANDATORY FISHING GRID



## 10. DISQUALIFICATION:

- a. A boat will be disqualified prior to the start of the tournament if it does not have a representative at the Skipper's Meeting
- b. A boat will be disqualified if it arrives outside the area below after the deadline of GPS Time 5:00PM Saturday 30<sup>th</sup> September 2023;



- c. A boat will be disqualified if during the tournament, it receives fuel from another vessel or refuels from a source other than regular fuel depots on Mahe, Praslin or La Digue;
- d. A boat must catch, store and return to the weighing station with fish caught by the team members on that boat only, and during the tournament only. A boat will be disqualified if it weighs in fish from any other source, or if it weighs fish caught prior to the start of the tournament;
- e. A boat will be disqualified if a non-registered person other than pre-approved members of the media joins the boat or is discovered on the boat during the tournament;
- f. A boat will be disqualified if a team member joins the boat after the tournament has started. Note

that all members of a team must be onboard when the boat departs and the same team members must be onboard when the boat returns to the weigh-in station;

- g. A boat will be disqualified if a team member disembarks from the boat during the tournament and then rejoins the boat from a different location;
  - h. A boat will be disqualified if a team member disembarks from the boat during the tournament. The only exception is when during the tournament, a boat informs the Tournament Organizer that it is offloading a sick or injured team member (or members), or offloading a team member due to an emergency situation. In such cases, the boat will be allowed to continue participating in the tournament without being disqualified;
  - i. If tassels are found on a participating boat and/or the weigh master determines that tassels have been used, the boat will be disqualified from the tournament and banned from future SSFC tournaments.
  - j. A boat will be disqualified if it does not return to the weigh station under its own power;
  - k. A boat that is disqualified will not be eligible for prizes.
10. **PRE-INSPECTION OF BOATS** - A member of the Tournament Committee/Officials has the right to board any boat for inspection prior to departure. The boat will be automatically disqualified if fish other than bait or tassels are found onboard.
11. **EMERGENCY INFORMATION** - Each team must send a message or WhatsApp to +248 260 30 41 by 6:00 P.M. Friday, 29<sup>th</sup> September 2023 with the Tournament Officials stating the area where the boat plans to fish during the competition. This information will only be used in the event of an emergency. In the event of an emergency, engine failure or where a vessel has requested assistance to be towed back to Mahe, we encourage all boats in the vicinity to respond immediately. Note that any boat providing such assistance to a distressed vessel will not be penalized for arriving past the competition deadline, and the boat will be eligible for weigh-in and prizes.
12. **WEIGH-IN** - Weigh-in shall commence at 3:00 P.M. Saturday 30<sup>th</sup> September 2023. Only the Team whose catch is being currently weighed will be allowed to the designated weighing area. The Team Captain will sign the prescribed form after the weighing is completed signifying his agreement thereto. No results will be issued during the weigh-in process. Boats must leave the weigh station pontoon as quickly as possible after the weigh-in to make room for others. You may keep all the fish that you have caught so please remove from the Weigh Station and jetty prior to departure.



13. **PROTESTS** – All protests must be lodged in writing to the Weighmaster by the captain of the team only within one hour of the last boat weighing-in by Saturday 30<sup>th</sup> September 2023. A deposit of SR 2,500 must accompany the protest. If the protest is determined as valid, the SR 2,500 will be refunded. The Weighmaster will consult with the tournament officials and their decision will be final and only announced at the prize-giving ceremony. In all cases the decisions made by the Committee are irrevocable and final.

14. **IGFA RULES** - IGFA equipment rules apply to all. IGFA angling rules apply to all except in the following circumstances:
- Once a fish is hooked, the rod can be passed to only 1 angler. Once the rod is passed to the angler, it cannot be transferred to another angler.
  - IGFA equipment rules apply but IGFA angling rules do not apply to ladies and juniors.

15. **SPECIAL BILLFISH RULES:**

- This is an all release billfish tournament
- All billfish caught must be released
- All billfish caught must be filmed on video as evidence in order to be eligible for points
- Under all circumstances, the team must do its utmost to revive a fish prior to release

16. **RELEASE RULES & PROCEDURES** - All billfish must be properly released in order to score points for the registered angler and his or her team. All of these requirements must be captured on video. Uninterrupted video footage should show: A billfish will be considered as released according to the IGFA rules as well as to Tournament Release Procedures:

- Only one Angler is allowed to handle the rod after the strike;
- A fish is considered officially released when one of the following actions is completed;
  - The crew is able to grab the leader;
  - The swivel hits the rod tip;
  - The connection (knot, splice, etc.) between the leader and the mainline/double passes through the rod tip;
  - Record the catch and release as per the release video camera requirements below.

17. **RELEASE VIDEO CAMERA REQUIREMENTS** - To score an official release, uninterrupted video footage must show:

- Show a team member or crew with the leader in hand while the fish is still hooked;
- Show a team member or crew with the SSFC Identification of the day while the fish is still hooked
- Show part of the fight and full release of the healthy fish swimming away;
- Clearly identify the species of billfish.
- At the end of the release, video must capture GPS time on the boat console GPS or handheld GPS, For absence of doubt, the official time of the release will be determined by video captured GPS recorded time on the screen of the boat console GPS or handheld GPS.



- At the end of the day's fishing, the video camera, its connection devices and all video footage must be brought to the weigh station for verification of official release or boated points.

18. **WINNING TEAM & RUNNER-UP - HEAVIEST YELLOW FIN WINS:** The Winning Team and Runner-up will be determined based on the heaviest single yellowfin tuna. Should there be a tie, the tie will be broken by the next heaviest Yellow Fin Tuna of the tied teams. If the tie continues, the tie shall be broken based on the heaviest of the other qualifying species and/or earliest billfish caught.

Should there be no Yellow Fin Tuna caught, the winner will be declared based on total points from the other tournament qualifying species.

**Barracuda, Dorado, Kingfish-Wahoo:** Barracuda, Dorado, Kingfish-Wahoo – 1 point per Kilogram (only 2 fish from each of the 3 categories above will be eligible for weighing). Should there be a tie in the individual species categories, the tie will be broken by weighing the 4<sup>th</sup> fish of the same species. This will continue until the tie is broken.

**Billfish Release:** Winner shall be declared based on points.

A released Marlin - 300 points

A released Sailfish/Spearfish – 100 points

A released Swordfish – 400 points

Should there be a tie for billfish release category, the boat with the earliest release of a billfish will be declared winner. This will be decided based on GPS time shown on the video.

**Barrel of Tuna:** The winning team will be declared based on 1 point per kg for the 3 heaviest Yellow Fin Tuna caught and weighed in per team.

**For purposes of Team and Skipper's League Ranking, rank will be determined based on the single heaviest yellow fin tuna per team. Should a team not catch a yellow fin tuna, that team will automatically rank below teams who caught a yellow fin tuna and rank based on total points of other species.**

19. **PRIZES** – There are seven (7) trophies overall to be awarded in the tournament. Prizes will be split evenly between boats for any ties in weight:

**Heaviest Barracuda**

**Heaviest Dorado**

**Heaviest Kingfish-Wahoo**

**Billfish Release Most Points**

**Barrel of Yellow Fin Tuna – 3 heaviest Yellow Fin Tuna**

**Tournament Runner-up – 2<sup>nd</sup> Heaviest Yellow Fin Tuna**

**Tournament Winner – Heaviest Yellow Fin Tuna**

21. **TOURNAMENT OFFICIALS & ORGANISERS**

2522106 – Tarak Patel – Chairman Seychelles Sports Fishing

Club 2519351 – Grant Heyer – Secretary Seychelles Sports

Fishing Club 2603041 – Farima Barbier – Official





**REGISTRATION FORM**

	<b>TEAM NAME</b>	<b>BOAT NAME</b>		<b>REGISTRATION NO.</b>
	<b>TEAM CAPTAIN</b>	<b>SAT PHONE NO.</b>		<b>TEL NO.</b>
1				
	<b>SKIPPER'S NAME</b>	<b>TEL NO.</b>		<b>TOTAL ON BOARD</b>
2				<i>(Incl. crew)</i>
	<b>OTHER ANGLERS</b>	<b>TEL NO.</b>	<b>OTHER ANGLERS</b>	<b>TEL NO.</b>
3			11	
4			12	
5			13	
6			14	
7			15	
8			16	
9			17	
10			18	

**REGISTRATION FEE**      **Rs 1500 per boat**

We have read and fully understand the rules governing our participation in this competition and agree to abide by them. In the event of a matter arising that is not covered by the rules, we accept that "fair play" shall apply and that the subsequent decision of the tournament officials shall be final.

All boats registered do so at their own risk. By registering as an angler in the tournament, the angler holds harmless the Tournament Committee, Tournament Judges, Organizers, Sponsors and all persons connected directly or indirectly with the operation of the Tournament from any liability for libel, slander, loss, damage, negligence, harm, injury, or death suffered by any participant, entrant, sports fisherman, their companions, boat captains, crew members, family, vessels and equipment which occur during or in conjunction with the Tournament.

\_\_\_\_\_  
**TEAM CAPTAIN**

\_\_\_\_\_  
**TOURNAMENT OFFICIAL**