

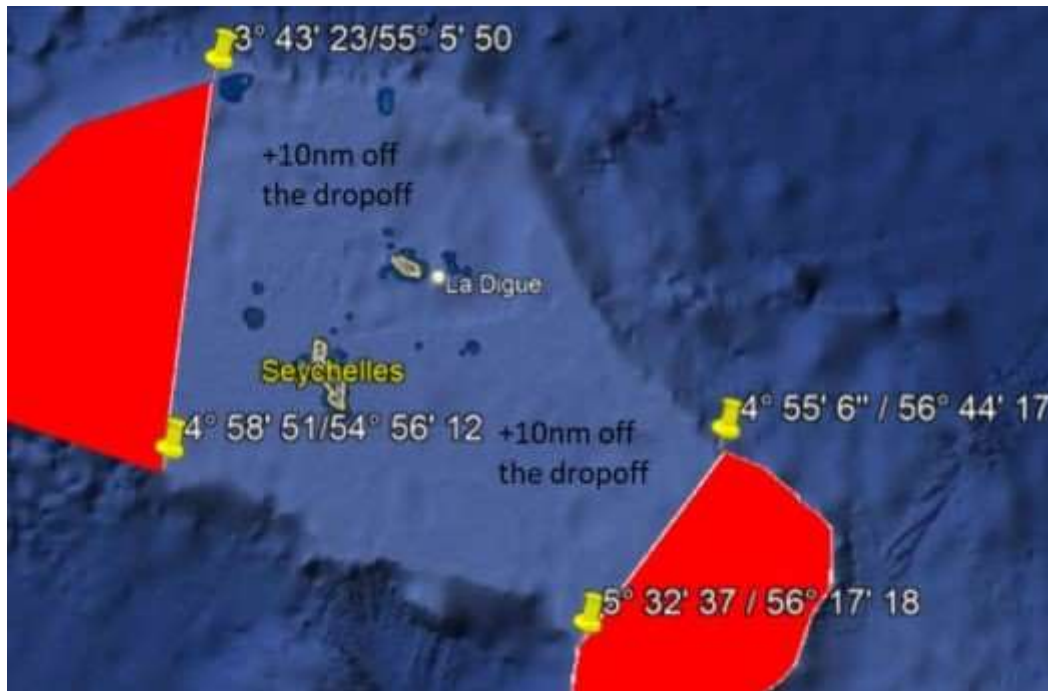


SSFC In Cooperation with Eku Present the 2nd Annual PKF Trevally Challenge 2022

TOURNAMENT RULES

1. **VENUE** – Marine Charter Association
2. **STARTING DATE & TIME** – Saturday 7th May 2022 any time AFTER 6:00 am (Boats may depart from Eden Island Marina, Wharf Hotel & Marina, Marine Charter Association or Providence Industrial Estate).
3. **ENDING DATE & TIME** – Saturday, 7th May 2021 at 3:00PM at Marine Charter Association.
4. **FISHING ZONE** – Mahe Plateau + 10 nautical miles
5. **PRIZE GIVING** – Saturday, 7th May 2022 directly after the weigh in.
6. **REGISTRATION DEADLINE** – Friday, 6th May 2022 at 6:00PM. Entry forms and registration fees must be paid by the deadline.
7. **REGISTRATION FEES** – SR 1500.00 per Boat.
8. **FISHING METHOD** –All fish must be caught using a rod and reel only (no hand lines or electric reels are allowed to catch fish in this competition). All recognised game fishing methods using a Rod and Reel will be permitted i.e. Trolling, Jigging, Popping, Casting and Fly Fishing will be permitted. Hookless teasers can be used. Tassles are not allowed. **Strictly only 2 hooks maximum per fishing rod/line.**
9. **FISHING TACKLE** –Rod and Reel only. **Strictly only 2 hooks maximum per rod/line.** *Hand lines may be used for hookless teasers only.*
10. **BAIT/LURES** – Live bait, dead bait or artificial lures are allowed
11. **ANGLERS** – A team must consist of a minimum of 2 anglers
12. **SKIPPERS MEETING** – A meeting will be held at Marine Charter Association starting at 5:00PM on Friday, 6th May 2022. All teams must be represented by at least 1 member.

13. DESIGNATED FISHING GRID: All teams are required to fish within this fishing grid. Fishing outside of this grid will result in disqualification. Weighmaster may request all teams to show their tracks to verify the team fished within the grid. Failure to display the fishing track upon request can also result in disqualification.



14. DISQUALIFICATION

- a. A boat will be disqualified prior to the start of the tournament if it does not have a representative at the Skipper's Meeting;
- b. A boat will be disqualified if it arrives outside the area below after the deadline of GPS Time 3:00PM Saturday, 7th May 2021.



- c. A boat will be disqualified if during the tournament, it receives fuel from another vessel or refuels from a source other than regular fuel depots on Mahe;
- d. A boat must catch, store and return to the weighing station with fish caught by the team members on that boat only, and during the tournament only. A boat will be disqualified if it weighs in fish from any other source, or if it weighs fish caught prior to the start of the tournament;
- e. A boat will be disqualified if a non-registered person other than pre-approved members of the media joins the boat or is discovered on the boat during the tournament;
- f. A boat will be disqualified if a team member joins the boat after the tournament has started. Note that all members of a team must be onboard when the boat departs and the same team members must be onboard when the boat returns to the weigh-in station.
- g. A boat will be disqualified if a team member disembarks from the boat during the

tournament and then rejoins the boat from a different location;

h. A boat will be disqualified if a team member disembarks from the boat during the tournament. The only exception is when during the tournament, a boat informs the Tournament Organizer that it is offloading a sick or injured team member (or members), or offloading a team member due to an emergency situation. In such cases, the boat will be allowed to continue participating in the tournament without being disqualified.

i. A boat will be disqualified if it does not return to the weigh station under its own power.

j. A boat will be disqualified if it fishes outside of the Mahe Plateau + 10 nautical miles fishing zone.

k. The use of foul language towards the weigh-in team or rules officials by the team or the team's associates will result in immediate disqualification.

l. A boat that is disqualified will not be eligible for prizes.

- 15. EMERGENCY PROCEDURES** - Each team must leave a sealed envelope by 6:00 PM on Friday 6th May 2022 with the weigh master stating the area where the boat plans to fish during the competition. This information will only be used in the event of an emergency. Boats should also ensure that they have necessary emergency equipment onboard such as life-jackets, flares, anchor, rope, VHF/SSB radios etc...VHF Radio (Channel 16) must be on at all times and navigation lights must be used at night.

In the event of an emergency, engine failure or where a vessel has requested assistance to be towed back to Mahé, we encourage all boats in the vicinity to respond immediately. Note that any boat providing such assistance to a distressed vessel will not be penalized for arriving past the competition deadline, and the boat will be eligible for weigh-in and prizes. Any boat accepting parts, maintenance, or any type of material assistance from any other boat will be automatically disqualified.

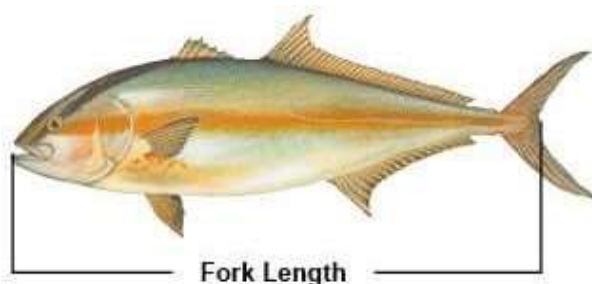
- 16. ELIGIBLE FISH** –All species of Karang ONLY are eligible for points and prizes:

Therefore, we encourage teams to release as many fish as possible. Mutilated fish will not be accepted. IGFA rules are in effect in regards to the determination of a mutilated fish.

- 17. MEASURING FORKLENGTH AND RELEASE OF FISH –**

- No fish will be weighed.
- All fish must have a video recorded forklength measurement using SSFC provided measuring tape to qualify.
- Giant Trevally/Karang Ledan MUST BE RELEASED with video evidence to qualify.
- BlueFin Trevally/Karang Ver MUST BE RELEASED with video evidence to qualify.
- Yellow Spot Trevally/Karang Plat, Bludger Trevally/Karang Balo do not have to be released but SSFC encourages you to release them.
- Threadfin Trevally MUST BE RELEASED with video evidence to qualify.

Fork Length – Measure in a straight line from the tip of the snout to the fork of the tail



- 18. SCORING –**

1. Giant Trevally/Karang Ledan (GT) minimum length 50 cm
2. BlueFin Trevally/Karang Ver minimum length 30cm
3. Yellow Spot Trevally/Karang Plat no minimum length
4. Bludger Trevally/Karang Balo no minimum length
5. All others no minimum length

All will earn one point per centimeter (fractions of a centimeter will also count). The weigh master's decision is final.

You must video the forklength measurement for each fish for the fish to be eligible for points. No video with clear forklength measurement shown, no points.

- 16. SSFC/PKF SPECIES BONUS** – A team catching an individual species of trevally will be awarded 500 point bonus for each species with no limit of trevally species.

Scoring example for “Team X”

Fish	Giant Trevally/Karang Ledan (cm)	Yellow Spot Trevally/Karang Plat(cm)	Bludger Trevally/Karang Balo (cm)	Total	Species Bonus	Total Points
1			55	55	500	
2			81	81	0	
3	120			120	500	
4	92			92	0	
5		62		62	500	
Totals	212	62	136	410	1500	1910

- 17. Number of Fish to be Weighed** – All fish caught will not be weighed.

- 18. WEIGH-IN** - Weigh-in shall commence at 2:00 P.M. Saturday 7th May 2022 on a first-come first-serve basis. Teams will hand over their video evidence to the weighmaster. The Team Captain will sign the prescribed form after the video transfer is completed signifying his agreement thereto of the species and amount of each species caught and videos provided. No results will be issued during the weigh-in process.

- 19. PROTESTS** - All protests must be lodged in writing by the team captain to the Weigh Masters within one hour of the last boat weighing-in on Saturday 7th May 2022. A deposit of SR 2,500 must accompany the protest. If the protest is determined as valid, the SR 2,500 will be refunded. The Weigh Masters will consult with the tournament officials and their decision will be final and only announced at the prize-giving ceremony.

- 20. PRIZES** – There are 7 prizes overall to be won in the tournament:

Prize 1 – Longest Giant Trevally/Karang Ledan
 Prize 2 – Longest Yellowspot Trevally/Karang Plat
 Prize 3 – Longest Bluefin Trevally/Karang Ver
 Prize 4 – Longest Bludger Trevally/ Karang Balo

Prizes above will be awarded to the team who has caught the longest forklength of the 4 fish species. If two teams are tied with the same weight/length within a category (species), the tie will be broken with the second longest qualifying fish of that category.

Prize 5 – Longest Other Trevally
 Prize 6 - Tournament Runner-Up (based on points – see next rule)
 Prize 7 - Tournament Winner (based on points – see next rule)

21. TOURNAMENT WINNER & RUNNER-UP – The overall tournament winner and runner-up will be determined as follows:

a. The team with the most Total Overall Points will win the tournament, and the Runner-up will be awarded to the team with the second highest point total. If there are any ties, then the team with the longest forklength single ELIGIBLE FISH in the tournament will win.

22. PRIZE GIVING - will be held at Marine Charter Association on Saturday, 7th June 2022 right after the weigh-in.

. TOURNAMENT OFFICIALS

Tarak Patel – Chairman Seychelles Sports Fishing Club

Grant Heyer – Secretary Seychelles Sports Fishing Club

Rod Thorrington – Treasurer Seychelles Sports Fishing Club



REGISTRATION FORM

TEAM NAME	BOAT NAME	REGISTRATION NO.	
TEAM CAPTAIN	SAT PHONE NO.	TEL NO.	
1			
SKIPPER'S NAME	TEL NO.	TOTAL ON BOARD	
2		<i>(Incl. crew)</i>	
OTHER ANGLERS	TEL NO.	OTHER ANGLERS	TEL NO.
3		11	
4		12	
5		13	
6		14	
7		15	
8		16	
9		17	
10		18	

REGISTRATION FEE **Rs 1500 per boat**

PRIZE-GIVING **Marine Charter Association – Saturday 7th May 2022**

We have read and fully understand the rules governing our participation in this competition and agree to abide by them. In the event of a matter arising that is not covered by the rules, we accept that “fair play” shall apply and that the subsequent decision of the tournament officials shall be final.

All boats registered do so at their own risk. By registering as an angler in the tournament, the angler holds harmless the Tournament Committee, Tournament Judges, Organizers, Sponsors and all persons connected directly or indirectly with the operation of the Tournament from any liability for libel, slander, loss, damage, negligence, harm, injury, or death suffered by any participant, entrant, sports fisherman, their companions, boat captains, crew members, family, vessels and equipment which occur during or in conjunction with the Tournament.

TEAM CAPTAIN

TOURNAMENT OFFICIAL

OFFICIAL USE ONLY

PAYMENT DETAILS : _____ CASH _____ CHEQUE/ DETAILS _____

DATE: _____ RECEIPT NO. _____ SIGNATURE _____

- | | |
|--|---|
| <input type="checkbox"/> HEINEKEN SLAM 22 ND JANUARY | <input type="checkbox"/> NATIONAL FISHING TOURNAMENT 11 TH /12 TH MARCH |
| <input type="checkbox"/> MARLIN SLAM 9 TH APRIL | <input type="checkbox"/> TREVALLY CHALLENGE 7 TH MAY |
| <input type="checkbox"/> SE MONSOON SAILFISH 11 TH JUNE | <input type="checkbox"/> YELLOWFIN CUP 24 TH SEPTEMBER |
| <input type="checkbox"/> LA DIGUE OFFSHORE FISHING TOURNAMENT | <input type="checkbox"/> BIG GAME CLASSIC 3 RD DECEMBER |